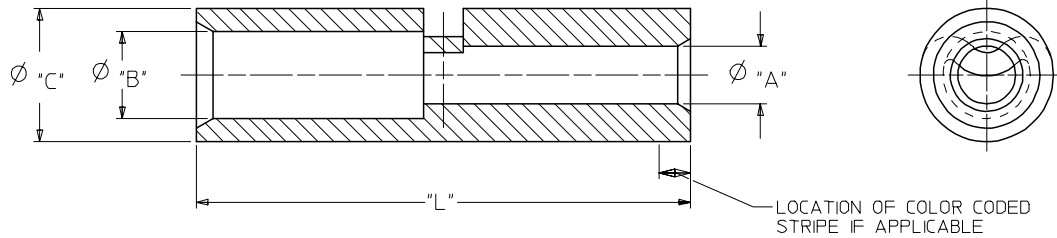


MATERIAL NUMBER	ENG. NUMBER	CODE STRIPE COLOR	"A"		"B"		"C" MAX.	"L" MAX.	CMA RANGE	
			AWG.	MIN. DIA.	AWG.	MIN. DIA.			LARGE I.D.	TO SMALL I.D.
I92150013	BA-331	RED	22-18	.073(1.85)	16-14	.090(2.29)	.160/4.06	.675/17.15	2050-5180 TO 509-2600	
I92150023	CB-346	BLUE	16-14	.099(2.51)	12-10	.216(5.49)	.223/5.66	.827/21.0	5180-13,100 TO 2050-5180	
I92150037	DC-354	YELLOW	12-10	.141(3.58)	*8	.174(4.42)	.291/7.39	.854/21.69	13,100-20,800 TO 5180-13,100	
I92150042	ED-362	RED	*8	.184(4.67)	*6	.239(6.07)	.375/9.53	1.045/26.54	20,800-33,100 TO 13,100-20800	
I92150209	HG-372	N/A	*2	.366(9.30)	1/0	.448(11.38)	.530/13.46	1.370/34.80	106,000 TO 66,400	



SALES DRAWING

- NOTES:
- MATERIAL: COPPER
FINISH: ELECTRO-TIN
 - DOES NOT HAVE COLOR CODED STRIPE.
 - PART IS ROHS COMPLIANT.

ADDED ROHS NOTE EC NO: ETC2007-0261 TIDRWNEHLE 2007/02/19 CHKD: JMACNEIL 2007/02/19 APPR: JMACNEIL 2007/02/19	QUALITY SYMBOLS ▽=0 ▽=0	GENERAL TOLERANCES (UNLESS SPECIFIED)		DIMENSION STYLE IN/MM		SCALE 5:1	DESIGN UNITS INCH	THIRD ANGLE PROJECTION	
			mm	INCH	DRAWN BY RMARSHALL	DATE 91/10/28	STEP DOWN BUTT CONNECTOR VERSAKRIMP		
		4 PLACES ± --- ± ---	3 PLACES ± --- ± ---	CHECKED BY RDEROSS	DATE 91/10/28				
		2 PLACES ± --- ± ---	1 PLACE ± --- ± ---	APPROVED BY RDEROSS	DATE 91/10/28	MOLEX INCORPORATED			
DRAFT WHERE APPLICABLE MUST REMAIN WITHIN DIMENSIONS		ANGULAR ±1/2°		MATERIAL NO. SEE CHART	DOCUMENT NO. SD-19215-004	SHEET NO. 1 OF 1			